



Safety



fast!

Jeff Powell
Z Midget Registry
910 Hirsch
Melrose Park, Illinois 60160

Dear Midgett!,

Welcome to the Z Midget Registry, started in November 1987. The purpose of this registry is to compile a list of all MG Midget owners and their cars, along with a list of parts and service suppliers both here and overseas.

This is not a club. No secret handshake, no club song, no dues. However, when sending in your registration form or writing for information, please send along a self-addressed stamped envelope.

Upon receipt of your registration, a list of registrants will be sent to you. This list will be updated from time to time.

Twice a year, in April and October, or more depending on demand, I would like to send out a classified ad listing: "Cars for Sale", Parts for Sale", "Cars/Parts Wanted", "Misc. Wanted/for Sale", (literature, regalia, etc.) to all registrants. When submitting an ad, please send \$5.00 in cash, check, or stamps to cover mailing.

Thanks for your interest in this registry, looking forward to hearing from you soon.

Safety Fast!

Jeff Powell

January 7th

Dear David + Laurel,

Thanks for your letter. nice to hear that all of the west coast magnette owners keep in touch!

Your car sounds very nice, glad to hear that you drive it on a regular basis. With the winters in Chicago, the cars stay in the garage for five months hibernating. We have had our Magnette for five years. It has been under restoration since we bought it and will be completed this spring. We can't wait! We also have a 71 MGB that I purchased new and have driven 140,000 miles, and restored it a few years ago, and a 48TC that is a driver, not a show car.

You are registered #33. I have the info on your car but would you please fill out the questionnaire for the files. Also include your variation # (found on a small rectangular plate screwed to the top rear portion of the left front fender)

Safety Rest!

JEFF



Dear MG Enthusiast,

October 17, 1988

Thanks to all of you for returning your registration form. To those of you who wrote a note of encouragement for taking on this task, I thank you.

As I wrote before, this is a low key type registry, the purpose being to provide you with names of other Z Mquette owners throughout the country, to share information concerning parts and services, and to relate any Mquette stories that you might have. With this in mind, please feel free to send anything that you would like to see in the future newsletters, or perhaps write an article on shows or technical information, etc. Thanks to Dennis Klemm for supplying the sales brochure in this newsletter.

In the last six months the membership has grown from seven to twenty-seven members with a total of 35 cars. Those six that received the first newsletter will notice that some of the material is being rerun. Sorry about that.

My wife and I attended the University Motors Summer Picnic in Grand Rapids, Michigan this past August. This is the premier MG event in this country! Over 360 MG's showed up, twenty three of them were TC's, which was the featured car. Three of those TC's were returning from the New England T Register, Kimber Alaskan Challenge. This tour started in New York, and in five weeks they drove 8,000 miles to the Arctic Circle and back to Grand Rapids. Imagine-8,000 miles in a TC! With our "tush" comfort Mquettes, we have no excuse not to show up at the University Motors Picnic in 1989. The featured car next year will be MG Saloon Models. John Twist, event organizer and registry member calls them "all those cars you've read about but have never seen". Be a part of the largest gathering of Z-Mquettes ever in the United States. You will be receiving more information on this event in the near future.

The British Car Union "All British Car Show" was held in the Chicago area in September. I had the pleasure of meeting Bob Ertzinger from Iowa, who was one of the first registry members. Nice to meet you Bob. Other registry members Calvin Barnes and Dennis Myzak showed up with their Mquettes, both are from the Chicago area.

I recently attended a Model-T Car Club sponsored flea market (never know what you might find under all of those Ford parts) and met with Dennis Klemm from Aurora, Illinois. Dennis owns a '58 ZB, along with several other MG's. Dennis also told me that he is going to England in December in search of MG parts and is planning on sending a container (yes, the type used on cargo ships) back to Chicago. He offered to look for parts for registry members. Send your wish list to Dennis today! Now is the time to buy those big items such as windscreens, bumpers, and stainless steel exhaust. See the membership list for his address.

(Over)

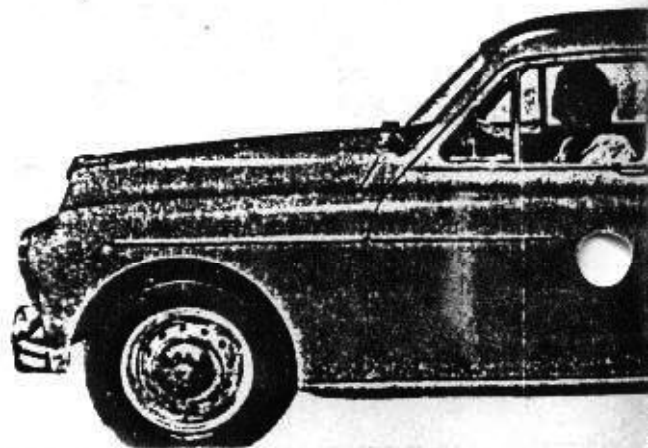
le information on two of our members. Don Lefferts uses his Magnette for club racing, Hillclimbs,G crossflow head has been installed. I have seen pictures of this car and Don in the now defunct Abington Classic magazine, and Don has a big grin on his face! Ray Young of Calif., should win a prize for owning seven Magnettes! Is he the original Magnut?

Again, thanks for your interest in this registry, and have a safe winter. The next newsletter will be out in early spring.

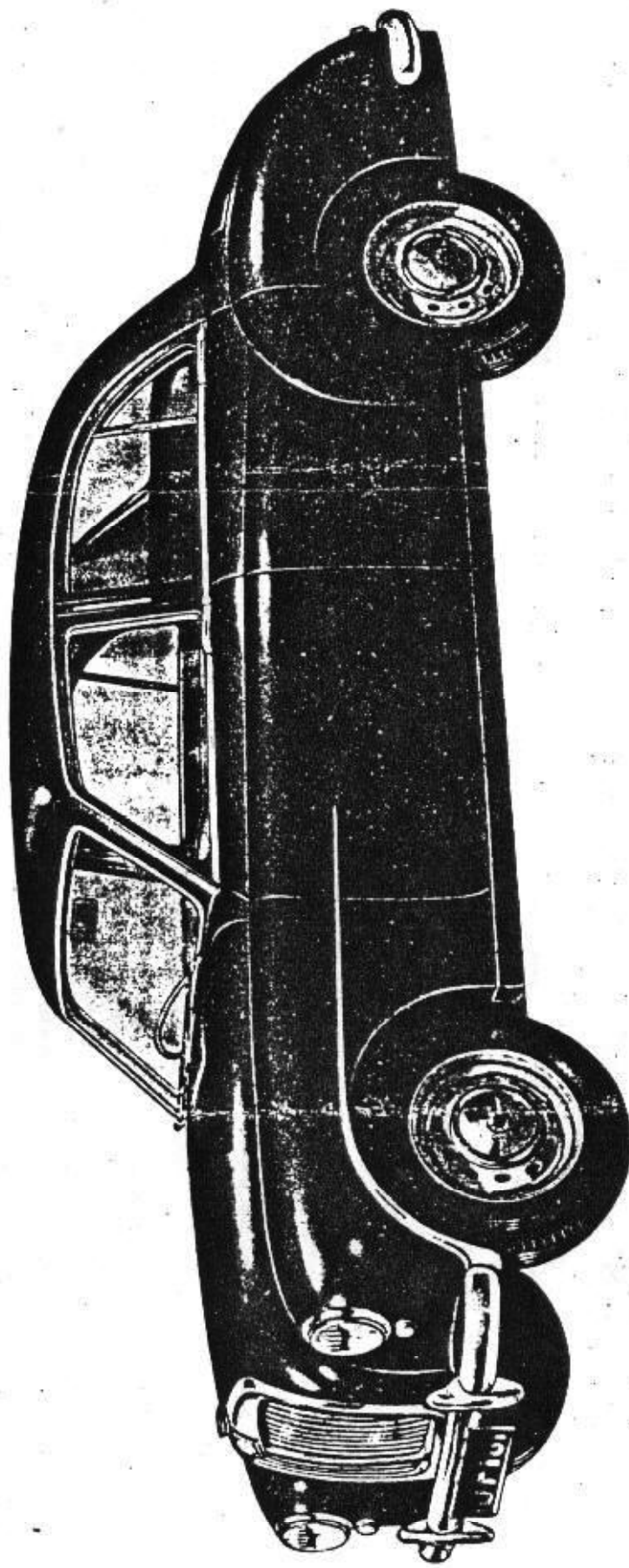
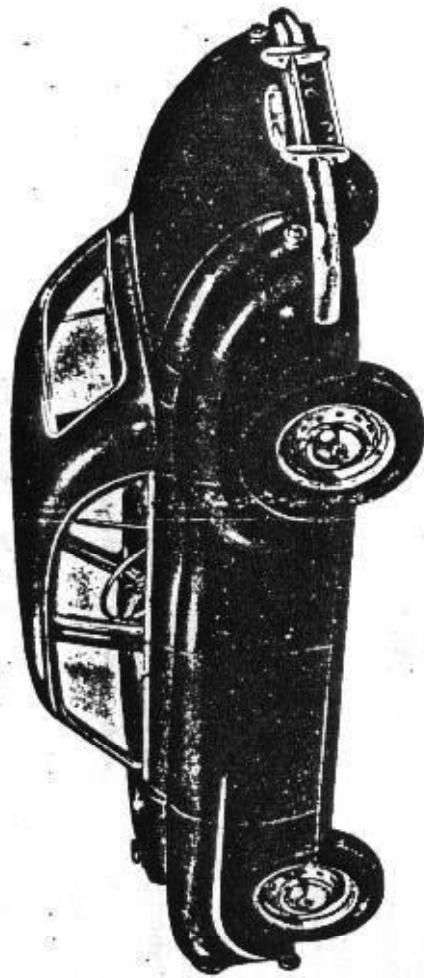
Octagonally,
Jeff

A superlative Luxury Car in everything but its price tag...

The clean and uncluttered body lines of the Magnette are matched by its luxuriously appointed interior . . . deep, comfortable seats are upholstered in supple, hand rubbed, English leathers. The hand finished instrument panel and door trim are in rich, beautifully grained polished walnut. Floors are thickly carpeted with finest pile.



THE NEW



MAGNETTE SALOON

SPECIALTIONS

ENGINE: Four cylinders: bore 73.025 mm. (2.875 in.), stroke 69 mm. (3.5 in.), cubic capacity 1449 cc. (90.54 cu. in.). Overhead valves operated by push-rods from three-bearing camshaft, driven by duplex roller chain. Gear-type oil pump in crankcase driven by helical gears and vertical shaft from camshaft. Balanced three-bearing crankshaft. Aluminium alloy pistons.

COOLING: By pressurized system assisted by impeller pump and fan: circulation thermostatically controlled.

IGNITION: 12-volt battery and coil. Automatic advance and retard with vacuum control and variable adjustment. Suppressor equipment.

CARBURATION: Twin S.U. semi-down-draught automatic carburettors fed from 9½-gallon (43-litre) rear tank by S.U. electric fuel pump mounted at rear. Oil bath air intake cleaner.

TRANSMISSION: Borg and Beck single-plate dry clutch to four-speed gearbox with synchromesh engagement for second, third and top gears. Remote control central gear change. Semi-floating back axle with hypoid final reduction gears, giving long life and silent operation. Hydraulic clutch actuation.

BRAKES: Lockheed hydraulic fully compensated brakes. Simple shoe adjustment which simultaneously adjusts hand brake. Central hand brake lever with pre-set button ratchet control.

BODY AND CHASSIS UNIT: The mono-construction body incorporates the body shell, floor, bulkhead, and frame members. The body has a turret-type top of immense strength; bodies are completely treated for rust prevention. Deep, well-sprung leather-covered cushions; centre arm-rest for rear seat; arm-rests on rear doors act as door-pulls. Self-latching check-strap hold doors in open position when desired. Polished wood fascia and garnish rails. Wide one-piece curved windscreen and large curved rear light. Large boot with easy-operating counter-balanced lid. Petrol tank filler concealed by flush-fitting panel with anti-theft lock. One-piece bonnet and radiator grille. Large parcel tray behind rear seat.

The terms of this leaflet form and constitute an offer, and the right is reserved to alter prices and/or specifications at any time without notice. Sales are conditional upon Terms of Business, Warranties and Service arrangements issued by The M.G. Car Company Limited and/or Nuffield Exporters Limited. For prices see separate list.

SUSPENSION: Independent front suspension by sturdy wishbone linkage with coil springs and telescopic dampers; long swivel pins; rubber-mounted semi-elliptic rear springs; telescopic hydraulic rear dampers with anti-sway mounting.

WHEELS AND TYRES: Ventilated disc-type wheels with four-tined faking, equipped with Dunlop 5.50—15 tyres. Spare wheel carried in side of boot.

STEERING: Rack and pinion steering gearbox. Three-spoke steering wheel with semicircular horn ring, giving clear vision. Self-cancelling trafficator control on steering wheel hub.

ELECTRICAL EQUIPMENT: High-output dynamo with compensated voltage control; 12-volt battery; double-dipping headlamps with prefocused bulbs and block lenses; main beam indicator light on fascia panel; foot dipping switch; separate sidelights; reversing lamp; dual-arm windscreen wiper; twin windscreen electric horns; trafficators with automatic cancelling switch; roof lamp with individual switch; two fog-lamps.

INSTRUMENTS: Speedometer with trip recorder; fuel gauge; temperature indicator; electric clock on roof rail. All instruments grouped in front of the driver.

GENERAL EQUIPMENT: Triplex toughened safety glass all round; pile carpets; two pull-out ashtrays on fascia; anti-glare driving mirror; push-button door lock release with fixed door handles; buckle-type front seats with individual adjustment; inbuilt forced ventilation system with controllable fresh-air intake and inbuilt demisting ducts; two sun visors; arm-rests on rear doors; a special jack and jacking points; windscreen washing equipment; provision has been made for an H.M.V. car radio with central speaker grille in fascia.

OPTIONAL EQUIPMENT: H.M.V. car radio at extra cost.

COLORS: Grey with Grey upholstery. Green with Green or Blue-tint upholstery. Black with Maroon, Biscuit or Green upholstery. Maroon with Maroon or Biscuit upholstery.

DIMENSIONS:			
Wheelbase	8 ft. 6 in. (2.59 m.)	Overall length	14 ft. 1 in. (4.292 m.)
Track (front)	4 ft. 3 in. (1.295 m.)	Overall width	5 ft. 3 in. (1.6 m.)
Track (rear)	4 ft. 3 in. (1.295 m.)	Overall height	4 ft. 10 in. (1.47 m.)



THE M.G. CAR COMPANY LIMITED (Proprietors: Ltd.) (Sales Division), **COWLEY, OXFORD**
 Telephone OXFORD 77777
 Telegrams VOITURETTE, COWLEY, OXFORD
 Telex OXFORD TELEX 71194

OVERSEAS BUSINESS: NUFFIELD EXPORTS LIMITED (Proprietors: Ltd.), **COWLEY, OXFORD, ENGLAND**
 Telephone OXFORD 77133
 Telegrams and Cable MORGEX, OXFORD
 Telex OXFORD 71168

Cable BENTLEY'S, BENTLEY'S SECOND PHASE, A.B.C. (FIFTH & SIXTH EDITIONS), WESTERN UNION AND PRIVATE

Printed in Great Britain by The Nuffield Press Limited, Cowley, Oxford, England 24/154 (25580) 9/55-55

SERIAL NUMBERS

In order to provide comprehensive information concerning the vehicle the identification plate is stamped with symbols.

The symbols consist of three letters and two figures followed by the usual serial numbers of the vehicle for cars of one colour, and four letters and two figures followed by the vehicle serial number for vehicles with a duotone finish.

The first letter when related to the code provides indication of the make and model of the vehicle—Morris Minor, Wolseley Four-Fifty, M.G. Magnette, etc.

The second letter provides an indication of the type of vehicle—Saloon, Tourer, Van, etc.

The third letter indicates the colour in which the vehicle is finished or the top colour on duotone vehicles.

The fourth letter indicates the bottom colour in which the duotone vehicle is finished. (In duotone vehicles the third and fourth letters are read in the same [colour] column.)

The first figure indicates the class to which the vehicle belongs—R.H.D. Home, L.H.D., etc.

The second figure indicates the type of paint used to finish the car—Cellulose, Synthetic, etc.

From this it will be clear that when an owner quotes the code number of his car it is a relatively simple matter to obtain a comprehensive picture of the vehicle concerned by reference to the tabulated code of symbols.

Model	Code	Type	Code	Colour	Code	Class	Code	Paint	Code
Wolseley 6/80	A	Saloon 4-door	A	Black	A	R.H.D. Home	1	Synthetic	1
Wolseley 4/50	B	Saloon 2-door	B	Light Grey	B	R.D.H. Export	2	Synobel	2
Morris Six	C	Tourer	C	Dark Red	C	L.H.D.	3	Cellulose	3
Morris Oxford	D	2-Seater	D	Dark Blue	D	North America	4	Metallic	4
Morris Cowley	E	Van	E	Mid Green	E	C.K.D.-R.H.D.	5	Primed	5
Morris Minor	F	Truck	F	Beige	F	C.K.D.-L.H.D.	6	Cellulosed body and Synthetic wings	6
Morris 5-cwt.	G	Cab	G	Brown	G				
M.G. Midget	H	Mail	H	C.K.D. Finish	H				
M.G. 1½-litre	J	Engineers	J	Dark Grey	J				
M.G. Magnette	K	Chassis	K	Light Red	K				
Riley 1½-litre	L	Traveller	L	Light Blue	L				
Riley 2½-litre	M				M				
Wolseley 4/44	N				N				
Quarter-ton	O				O				
Half-ton	P			Ivory	P				
Wolseley 6/90	R			White	R				
Isis	S			Mid Grey	S				
Wolseley 15/50	T			Light Green	T				
				Dark Green	U				

As an example:

The symbols DAC12/1001 when decoded give—Oxford, Saloon 4-door, Dark Red, R.H.D. Home, Synobel, Car No. 1001.

The symbols KAKP 33/1002 when decoded give—M.G. Magnette, Saloon 4-door, Light Red (top), Ivory (bottom), L.H.D., Cellulose, Car No. 1002.

Magnette. Issue 5. 8324—5/57



Safety



fact!

INFORMATION SERVICES

Paul Batho
2 Broadway Close
Harwell, Oxfordshire
OX11 0LB England U.K.

The MG Owners Club
2-4 Station Road
Swavesey
Cambridgeshire CV4 5QJ
England, U.K.

Anders Ditler Clavsager
Archivist
British Motor Industry
Heritage Trust
Castle Road, Studley
Warwickshire B80 7AJ
England, U.K.

MG Car Club Magnette
Register Overseas Liaison
Officer. Supplies register
magazine and other MG Car
Club information.

Supplies monthly magazine
"Enjoying MG"

Factory information about
your MG is available for a
crisp \$10.00 and your vehicle
I.D. number.
(for all MG's '54-'77)

SERIAL NUMBERS

In order to provide comprehensive information concerning the vehicle the identification plate is stamped with symbols.

The symbols consist of three letters and two figures followed by the usual serial numbers of the vehicle for cars of one colour, and four letters and two figures followed by the vehicle serial number for vehicles with a duotone finish.

The first letter when related to the code provides indication of the make and model of the vehicle—Morris Minor, Wolseley Four-Fifty, M.G. Magnette, etc.

The second letter provides an indication of the type of vehicle—Saloon, Tourer, Van, etc.

The third letter indicates the colour in which the vehicle is finished or the top colour on duotone vehicles.

The fourth letter indicates the bottom colour in which the duotone vehicle is finished. (In duotone vehicles the third and fourth letters are read in the same [colour] column.)

The first figure indicates the class to which the vehicle belongs—R.H.D. Home, L.H.D., etc.

The second figure indicates the type of paint used to finish the car—Cellulose, Synthetic, etc.

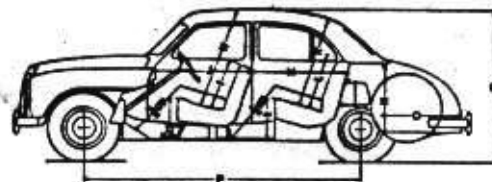
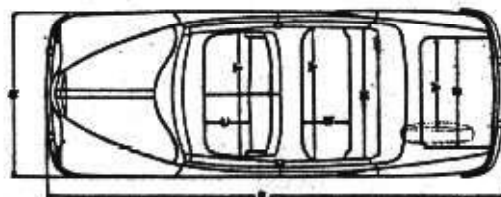
From this it will be clear that when an owner quotes the code number of his car it is a relatively simple matter to obtain a comprehensive picture of the vehicle concerned by reference to the tabulated code of symbols.

Model	Code	Type	Code	Colour	Code	Class	Code	Paint	Code
Wolseley 6/80	A	Saloon 4-door	A	Black	A	R.H.D. Home	1	Synthetic	1
Wolseley 4/50	B	Saloon 2-door	B	Light Grey	B	R.D.H. Export	2	Synobel	2
Morris Six	C	Tourer	C	Dark Red	C	L.H.D.	3	Cellulose	3
Morris Oxford	D	3-Seater	D	Dark Blue	D	North America	4	Metallic	4
Morris Cowley	E	Van	E	Mid Green	E	C.K.D.-R.H.D.	5	Primed	5
Morris Minor	F	Truck	F	Beige	F	C.K.D.-L.H.D.	6	Cellulose body and Synthetic wings	6
Morris 5-cwt	G	Cab	G	Brown	G				
M.G. Midget	H	Mail	H	C.K.D. Finish	H				
M.G. 1½-litre	J	Engineers	J	Dark Grey	J				
M.G. Magnette	K	Chassis	K	Light Red	K				
Riley 1½-litre	L	Traveller	L	Light Blue	L				
Riley 2½-litre	M		M		M				
Wolseley 4/44	N		N		N				
Quarter-ton	O		O		O				
Half-ton	P		P		P				
Wolseley 6/90	R		R	Ivory	R				
Isis	S		S	White	S				
Wolseley 15/50	T		T	Mid Grey	T				
				Light Green	U				
				Dark Green	U				

As an example:

The symbols DAC12/1001 when decoded give—Oxford, Saloon 4-door, Dark Red, R.H.D. Home, Synobel, Car No. 1001.

The symbols KAKP 33/1002 when decoded give—M.G. Magnette, Saloon 4-door, Light Red (top), Ivory (bottom), L.H.D., Cellulose, Car No. 1002.



Dimensions

A(max.)	B(min.)	C(max.)	D(min.)	E	F	G	H	I
46 in.	42 in.	44 in.	39 in.	14 in.	13½ in.	13½ in.	38 in.	50 in.
J	K	L	M	N	O	P	Q	R
53 in.	36 in.	23 in.	30 in.	25 in.	26 in.	102 in.	58 in.	63 in.
S	T	U	V	W	X	Y	Z	
169 in.	51 in.	28 in.	51 in.	18 in.	47 in.	28 in.	38 in.	



Safety



fast!

TECH STUFF!!

To mount ZB rack and pinion, use 8 grommets #GEX 7151, and 4 spacers #GEX 7152 - these are MG Midget exhaust hanger parts.

Some Midas Muffler Shops still have catalogs with the exhaust system bending chart, try them before going to a custom shop-cheaper and fits properly. The exhaust clamp is from a MG 1100 or Austin America.

Replace worn out leaf springs by taking them to a local spring shop to make new ones from measurements of the originals. The spring width is standard spring size. A new set in the Chicago area cost approx. \$170.00 in 1987.

The correct silver color for wheels is Ditz DAR2593 or Duplicolor RM-19 (spray Can). The correct engine color is Rinshed Mason E3123M.

SPECIAL OFFER!

New windscreen and rear window seals. Original stock type so that you can use your stainless steel trim, not the after-market plastic seal that NTG supplies. (Sorry, Varitone rear window seal not available.) Windscreen seal - \$55.00, rear window seal - \$35.00.

Deadline for this offer is ~~November~~ 30th!

December 2

Jeff Powell

PARTS WANTED

Rear carb throttle body, link between rear carb throttle shaft and accelerator pedal linkage, Magnette intake manifold with vacuum tap, vacuum operated windshield washer pump, 3.07 or 3.31 MGC diff. gears.

Larry Wilson

Set of front and rear bumper overriders, no dents, surface rust 'ok'.

Jeff Powell

CARS FOR SALE

1958 ZB steel blue - "basket case, but complete", must sell.

Vincent Chan

PARTS FOR SALE

'57 or '58 Midget for parts. Drivetrain, glass, suspension, gauges, doors, interior parts in green. Hockey stick chrome, front ash tray, etc.

Bob Ertzinger

Wood dash, steering wheel center, two speedometers - one in miles, the other in kilometers, engine and gearbox, brakes, parts to convert to wire wheels.

John Twist

Parting out '55 ZB, no engine, body beyond repair, many small parts available.

Richard Egan

Rear window (ZA), possible Z block, transmission, rear end, driver and two rear doors, some chrome ('57 ZB), layout sheet showing how to cut carpet, interior parts, brake parts, hood and truck lid, MGB transmission and rear end, Z rack gear.

Larry Wilson

Knows of 2 1/2 Z Midgets - "if there is any interest, I can furnish details, they can be had for low cost."

Gerald Felper

Complete set of doors, with or without hardware, boot lid with hinges and springs, front and rear seats covered in tan vinyl.

Jeff Powell

Exhaust manifold, clock, road wheels - "sold the car, have these parts left."

Dennis Frye
8627 N.E. Dyer St.
Portland, OR.
97220